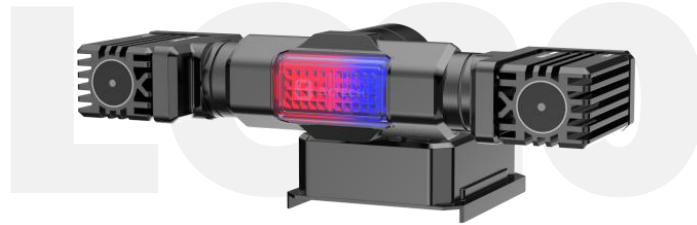


Multi-functional Laser Mapping System-SAGITTARIUS LG20



The Multi-functional Laser Mapping System SAGITTARIUS LG20 is our second-generation laser device, independently developed to promote the drone linkage integrating air and space capabilities. It features a pan-tilt version of high-power laser devices, comes with multiple hot-swappable modules, supports hot-swapping, includes red and blue flashing lights, and can be installed without tools. LG20 is widely used in scenarios such as tracking and locking, direction and orientation guidance, mapping and warning, and fill light. It meets the night use needs of drones in various industries and brings users a new experience.



Red and blue
warning



Multiple projection
patterns



Lighting



Lens follow-up



Guidance



Infrared fill light



Hotswappable
modules



AI light concentration

Product Parameters

○ Device host

Name	Multi-functional Laser Mapping System
Model	LG20
Dimensions	100mm*153mm*50mm
Weight	255g±4%
Rated power	36W
Rated voltage	24V
Current	1.5A
Power supply mode	power supply by drone
Control distance	consistent with drone link
Control	drone remote control
IP Grade	IP54
AI light concentration	support
Irradiation distance	2000m (point light)
Laser module	520 nm (point), 520 nm (mapping), 850 nm (fill light), LED (lighting)
Flashing lights	red and blue
Flashing light power	5.8W
Hot replace of lamp cap	support
Heat-dissipating	passive
Number of hangable lamp caps	2
Material	aluminum alloy and ABS
Installation	quick-release
Support model	DJI Matrice 350 RTK, Matrice M300 RTK,and Matrice M30 series
Operating temperature	-25°C to 55°C
Storage temperature	-30°C to 60°C

Product Characteristics

○Compact design and fast installation

The equipment features a small size, light weight, and easy installation, and it can be installed bare-handed without tools.

○Abundant functions and diverse combinations

The module adopts a quick-release and replacement design, is equipped with various modules such as guidance, mapping, fill light, and lighting. The dual-module design meets various needs of users in various scenarios.

○Hot plugging and fast conversion

The laser module supports hot replace operation, and the simple and fast clip-type design speeds up operation tasks.

○Intelligent light concentration Lens follow-up

Two-axis stabilized pan-tilt with AI algorithm automatic light concentration operates synchronously following the lens.

○High-efficiency heat dissipation and continuous irradiation

The all-aluminum alloy material has high-efficiency heat dissipation and delayed light failure, providing protection for longterm irradiation.

○High-altitude mapping and rapid maneuver

With the top view, which is fast and precise, solve the problem of lack of temporary warning means on site.